

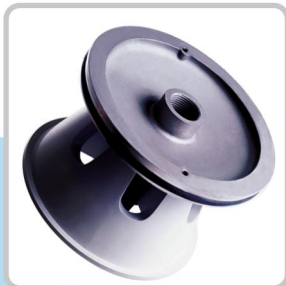
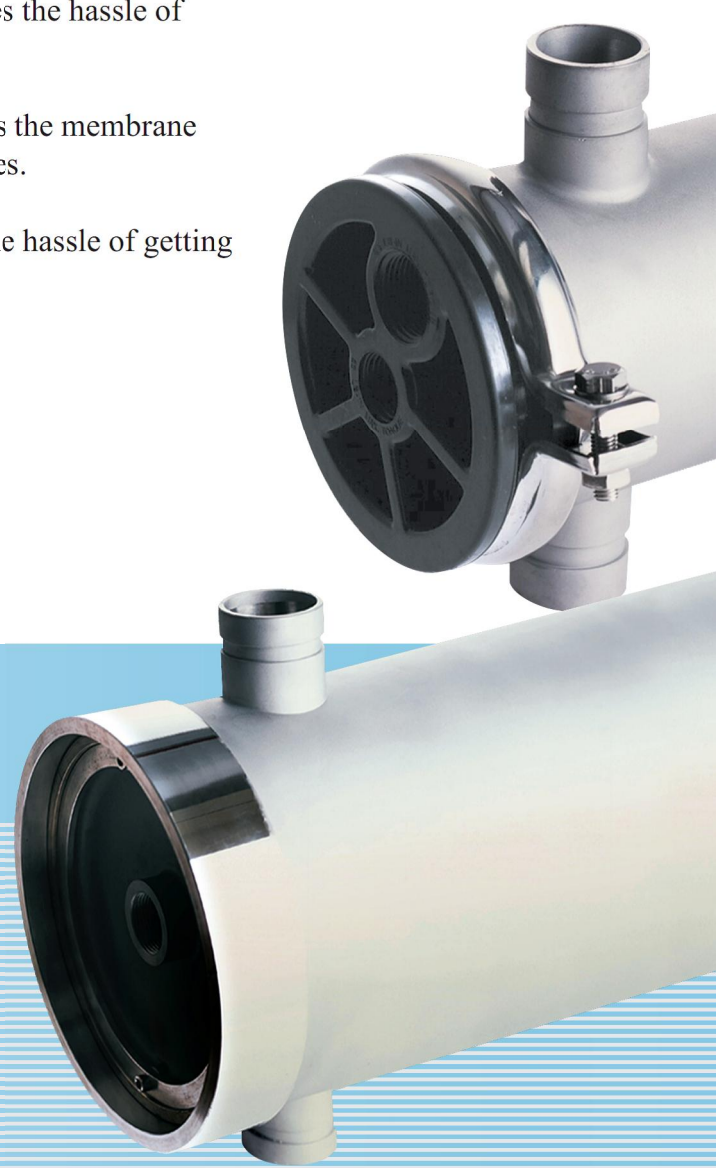
MEMBRANE HOUSING SERIES - SIDE PORT

AquaSource membrane housing is designed for price driven markets.

Side-entry design gets rids of manifolds and eliminates the hassle of high pressure plumbing alignment.

Seamless stainless steel materials construction ensures the membrane housings operated in tough conditions with no leakages.

Industrial standard permeate tube design eliminates the hassle of getting the right product end adapter.



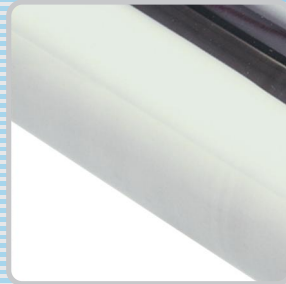
Rigid end cap enclosure ensures element in place



Rubber pads and straps



Plug, clamp and inlet adapter



Mechanical-polished finishing

Ordering Information (Example: SP-40-1L-20V)

Model	Housing Diameter	No. of Element	Feed Port Size
SP = Side Port	40 = 4.0 inch	1L = (1) 40-inch element	20V = 1.25 inch
S4P = 4 Side Port	80 = 8.0 inch	2L = (2) 40-inch elements	32V = 2.0 inch
		3L = (3) 40-inch elements	
		4L = (4) 40-inch elements	

Remarks: Housing materials SS304 ; 0.5-inch FNPT permeate port for 4-inch housing & 1.0-inch FNPT permeate port for 8-inch housing; Victualic connection feed ports.



AquaSource Components Ltd.

Address: Room 1806, 18/F., Regent Centre, 88 Queen's Road C., Central, Hong Kong.

Tel: (852)3427-3040

Fax: (852)3186-6739

www.aqua-components.com

e-mail: sales@aqua-components.com